



- (51) **International Patent Classification:**
E04C 2/288 (2006.01) *E04C 2/04* (2006.01)
- (21) **International Application Number:**
PCT/NO2009/000390
- (22) **International Filing Date:**
16 November 2009 (16.11.2009)
- (25) **Filing Language:** Norwegian
- (26) **Publication Language:** English
- (30) **Priority Data:**
20084809 14 November 2008 (14.11.2008) NO
- (71) **Applicant (for all designated States except US):** SEL-VAAG SPINOFF AS [NO/NO]; Lørenvangen 22, N-0580 Oslo (NO).
- (72) **Inventors; and**
- (73) **Inventors/Applicants (for US only):** STENSRUD, Trond [NO/NO]; Jeppesvei 12, N-0768 Oslo (NO). SKÅRBERG, Petter [NO/NO]; Milåsveien 3, N-3230 Sandfjord (NO).
- (74) **Agent:** ZACCO NORWAY AS; P.O. Box 2003, Vika, NO-0125 Oslo (NO).
- (81) **Designated States (unless otherwise indicated, for every kind of national protection available):** AE, AG, AL, AM, AO, AT, AU, AZ, BA, BB, BG, BH, BR, BW, BY, BZ, CA, CH, CL, CN, CO, CR, CU, CZ, DE, DK, DM, DO, DZ, EC, EE, EG, ES, FI, GB, GD, GE, GH, GM, GT, HN, HR, HU, ID, IL, IN, IS, JP, KE, KG, KM, KN, KP, KR, KZ, LA, LC, LK, LR, LS, LT, LU, LY, MA, MD, ME, MG, MK, MN, MW, MX, MY, MZ, NA, NG, NI, NO, NZ, OM, PE, PG, PH, PL, PT, RO, RS, RU, SC, SD, SE, SG, SK, SL, SM, ST, SV, SY, TJ, TM, TN, TR, TT, TZ, UA, UG, US, UZ, VC, VN, ZA, ZM, ZW.
- (84) **Designated States (unless otherwise indicated, for every kind of regional protection available):** ARIPO (BW, GH, GM, KE, LS, MW, MZ, NA, SD, SL, SZ, TZ, UG, ZM, ZW), Eurasian (AM, AZ, BY, KG, KZ, MD, RU, TJ, TM), European (AT, BE, BG, CH, CY, CZ, DE, DK, EE, ES, FI, FR, GB, GR, HR, HU, IE, IS, IT, LT, LU, LV, MC, MK, MT, NL, NO, PL, PT, RO, SE, SI, SK, SM, TR), OAPI (BF, BJ, CF, CG, CI, CM, GA, GN, GQ, GW, ML, MR, NE, SN, TD, TG).
- Published:**
— with international search report (Art. 21(3))

(54) **Title:** CONSTRUCTIONAL ELEMENT AND A METHOD FOR THE MANUFACTURE OF A CONSTRUCTIONAL ELEMENT

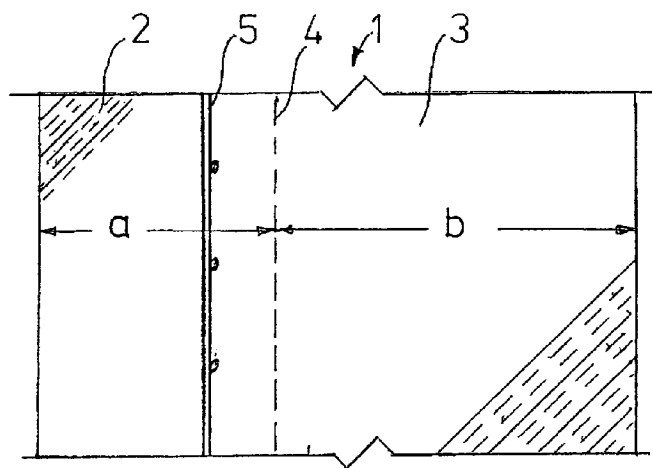


Fig.1

(57) **Abstract:** A slab-formed constructional element (1) of super light concrete comprising at least 50 % by volume expanded plastic material such as EPS, is having varying densities in the direction along the thickness thereof. As an example, the element (1) has a first layer (2) with a density of approximate 400 kg/m³ and a second layer (3) with a density of about 70 kg/m³. The thickness (a) of the first layer (2) is somehow less than the thickness of the second layer (3), the first layer being the load supporting part of the constructional element, whereas the second layer (3) constitutes substantially a thermal insulating part of the constructional element. The first layer (2) can have a mesh reinforcement (5). A method for the manufacture of the constructional element is also described.